

High Pressure IP69K Waterproof HMI Panel PC 21.5" OP Series



Highlights

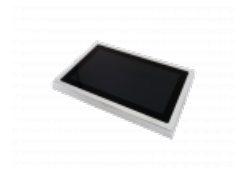
The most complete high pressure IP69K waterproof HMI Panel PC developed for demanding food production like meat, fish and poultry. Withstands intensive spray down and high pressure cleaning over and over again.

Benefit from the full HD resolution multi touch screen. Avoid condensation with the optical bonded, splinter proof and auto-calibrated touch screen operable with gloves.

The back side of the HMI supports tube mounting with hidden connectors and cables providing the market's best long term protection against high pressure water treatment. The ultimate durability is fulfilled with low power consumption, passive cooling and no moving parts.

Reduce cost and time spending with our global partner model based on your specific requirements. Let Blue Line take responsibility for delivery on time. Blue Line's ultimate goal is to help our customers get peace of mind by handling all relevant details such as securing the right configuration, software setup, mounting, packaging, labeling etc. Ask for references from your industry.

- Food / wet environment
- IP69K high pressure waterproof PC
- 21.5" PCAP multi touch panel PC
- Stainless steel AISI 316L
- Easy to clean
- Splinter-proof front
- Full HD resolution 1920 x 1080
- Optical bonding
- Integrated PC / client
- Fanless operation
- Windows 7 / 8 / 10
- Tube mount with hidden connectors and cables
- Other mounting VESA / wall / pipe / swivel arm / gas arm
- Long product life cycle



BLUE LINE
IT for Demanding Environments

- has more than 30 years experience
- delivers reliable IT solutions for demanding environments
- builds compact and high performance solutions
- focuses on long duration, 24/7-operation, and ruggedness
- is ISO 9001:2015-certified
- is known for providing the best assistance and services in all phases.

High Pressure IP69K Waterproof HMI Panel PC

21.5" OP Series

Specifications

Model Type

High pressure IP69K HMI Panel PC

Construction

Fully sealed enclosure in stainless steel AISI 316L

Cooling

Fanless

Ingress Protection

IP66/IP69K

Environment

Operating temperature 0°C to +40°C
Storage temperature -20°C to +70°C
Humidity 10 to 90% @ +40°C, non-condensing

Certification

CE / FCC CLASS A

Display

21.5" 1920 x 1080, 16:9, FHD LCD panel

Touch

Projected capacitive multi touch (supports gloves)
Optical bonding

Brightness

400 nits

Viewing Angle

160/160

Processor

Intel Atom Bay Trail E3845 quad core, 1.9GHz

Chipset

Integrated SoC

RAM

1 x 8GB DDR3L SO-DIMM

Storage

1 x 2.5" SSD / HDD
1 x mSATA

Rear Input / Output

2 x Gbe LAN
1 x USB 2.0 connector
1 x M12 3pin DC power
1 x M4 ground screw
All connectors come with waterproof cap

Expansion

1 x Mini PCIe Slot

Operating System

Windows 7 / 8 / 10
Windows Embedded 7 / 8
Windows 10 IoT Enterprise
Linux

Thin Client

ThinManager, Microsoft Remote Desktop (RPD), NoTouch OS, VNC, Citrix and others

Power Supply

+9V to +36V DC-in by M12 3-pin

Power Consumption

Max 30W

Mounting



High Pressure IP69K Waterproof HMI Panel PC 21.5" OP Series

VESA 100

Stainless steel tube / wall / pipe / supporting arm

Other options available according to requirements

Dimension and Weight

21.5" H 404 x W 613 x D 45mm 11.8kg

Accessories Included

Stainless steel tube mount

USB cable

AC to DC power adapter

Accessories Optional

M12 DC power cable

USB cable

LAN cable

Warranty and After Sales Support

Standard 1 year (option for 3 years)

Ordering Information

1510

